

Virginia Landmarks
December 2, 1998

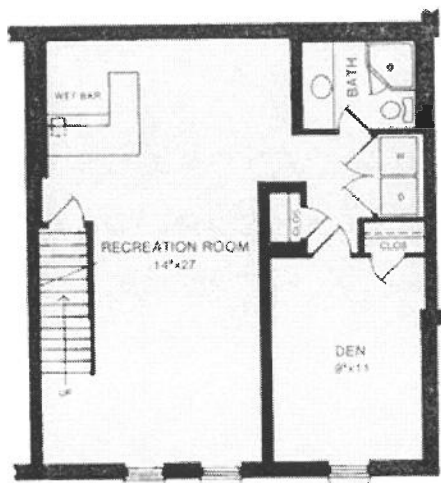
Fairlington Historic District

National Register
March 29, 1999

[← Back](#)

[Back to Models and Floor Plans Home Page](#)

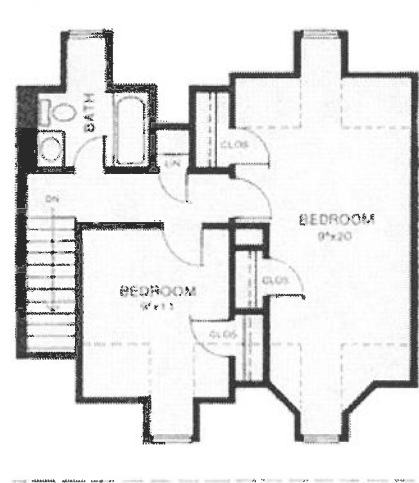
ARLINGTON



LOWER LEVEL



FIRST FLOOR



SECOND FLOOR

Dimensions shown on these floor plans are approximate and subject to change.

Virginia Landmarks
December 2, 1998

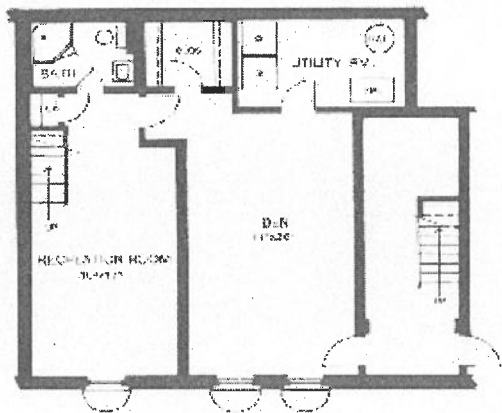
Fairlington Historic District

National Register
March 29, 1999

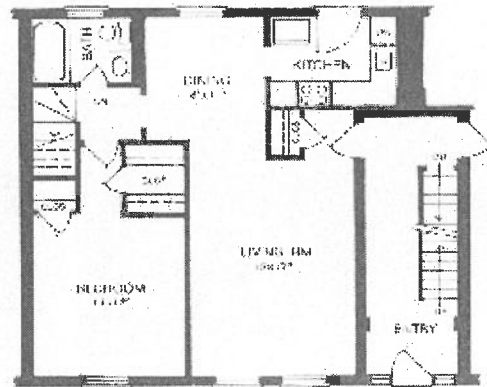
[← Back](#)

[Back to Models and Floor Plans Home Page](#)

BARCROFT[★]



LOWER LEVEL



FIRST FLOOR

Dimensions shown are approximate and subject to change

★AVAILABLE IN 2 & 3 STORY BUILDINGS

Virginia Landmarks
December 2, 1998

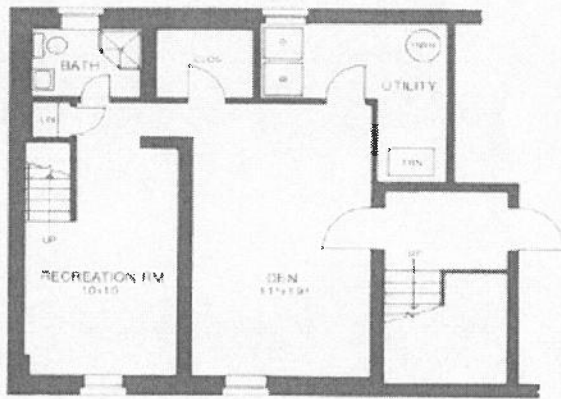
Fairlington Historic District

National Register
March 29, 1999

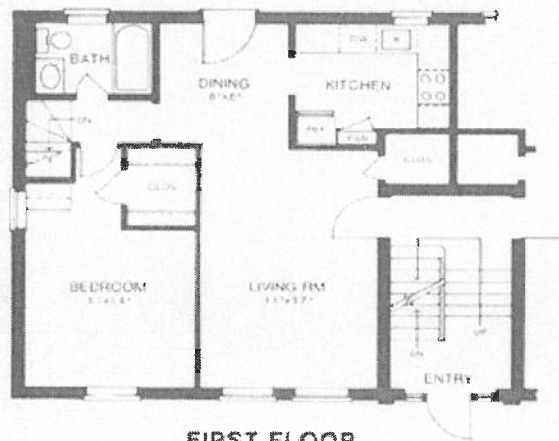
[← Back](#)

[Back to Models and Floor Plans Home Page](#)

BARCROFT II[★] & III^{★★}



LOWER LEVEL



FIRST FLOOR

Dimensions shown are approximate and subject to change

- ★ TWO STORY BUILDINGS
- ★★ THREE STORY BUILDINGS

Virginia Landmarks
December 2, 1998

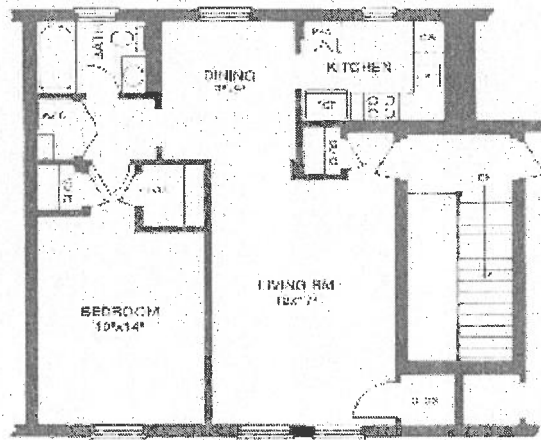
Fairlington Historic District

National Register
March 29, 1999



[Back to Models and Floor Plans Home Page](#)

BRADDOCK



THIRD FLOOR

Dimensions shown are approximate and subject to change

Virginia Landmarks
December 2, 1998

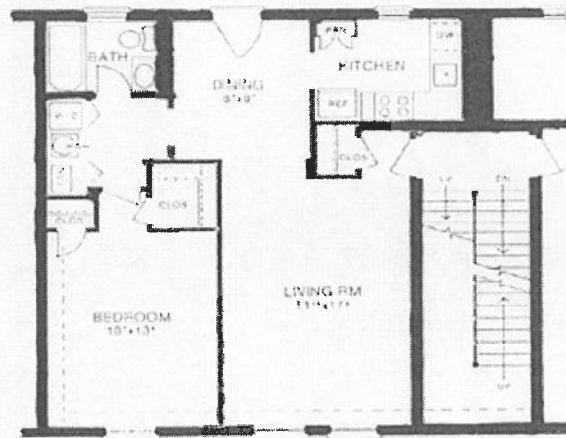
Fairlington Historic District

National Register
March 29, 1999

[← Back](#)

[Back to Models and Floor Plans Home Page](#)

BRADDOCK II



SECOND FLOOR

Dimensions shown are approximate and subject to change

Virginia Landmarks
December 2, 1998

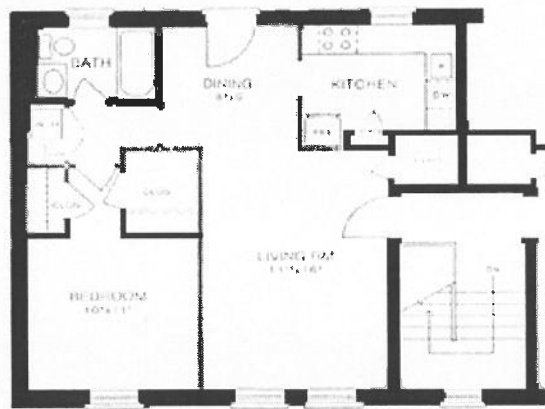
Fairlington Historic District

National Register
March 29, 1999



[Back to Models and Floor Plans Home Page](#)

BRADDOCK III



THIRD FLOOR

Dimensions shown are approximate and subject to change

Virginia Landmarks
December 2, 1998

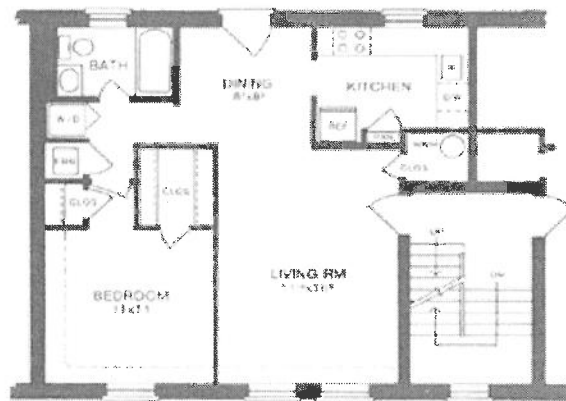
Fairlington Historic District

National Register
March 29, 1999



[Back to Models and Floor Plans Home Page](#)

BRADDOCK IV



SECOND FLOOR

Dimensions shown are approximate and subject to change

Virginia Landmarks
December 2, 1998

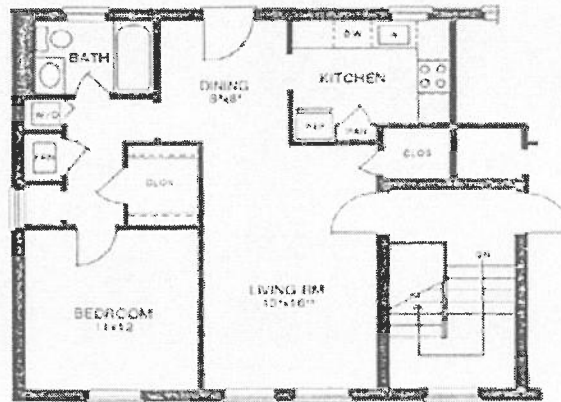
Fairlington Historic District

National Register
March 29, 1999



[Back to Models and Floor Plans Home Page](#)

BRADDOCK V



SECOND FLOOR

Dimensions shown are approximate and subject to change

Virginia Landmarks
December 2, 1998

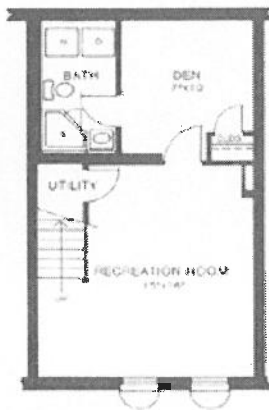
Fairlington Historic District

National Register
March 29, 1999

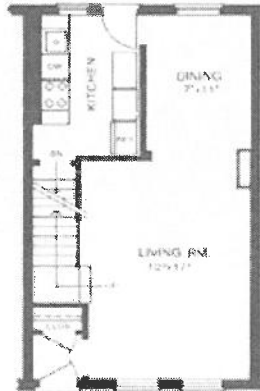


[Back to Models and Floor Plans Home Page](#)

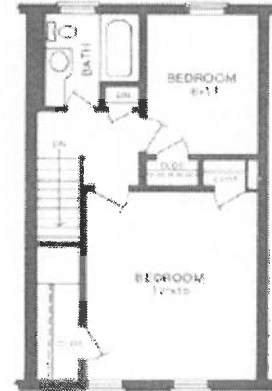
CLARENDON



LOWER LEVEL



FIRST FLOOR



SECOND FLOOR

Dimensions shown are approximate and subject to change

Virginia Landmarks
December 2, 1998

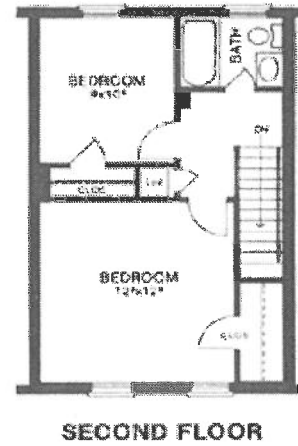
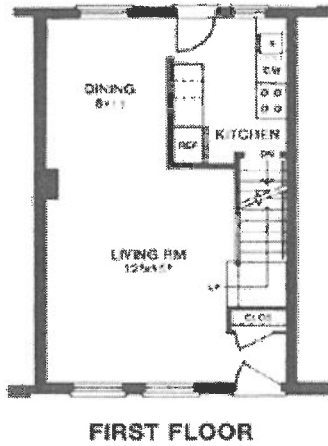
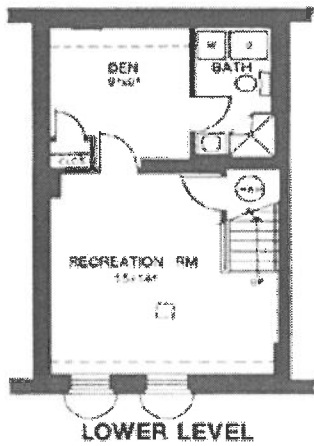
Fairlington Historic District

National Register
March 29, 1999



[Back to Models and Floor Plans Home Page](#)

CLARENDON II



Dimensions shown are approximate and subject to change

Virginia Landmarks
December 2, 1998

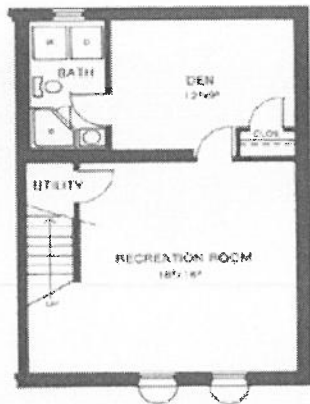
Fairlington Historic District

National Register
March 29, 1999

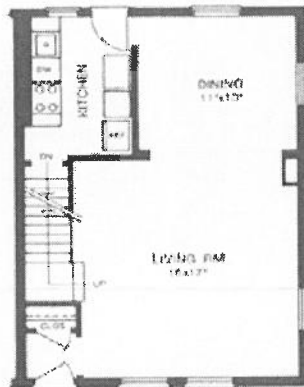


[Back to Models and Floor Plans Home Page](#)

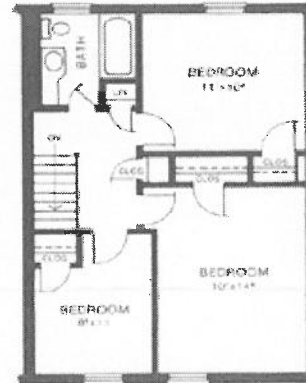
DOMINION



LOWER LEVEL



FIRST FLOOR



SECOND FLOOR

Dimensions shown are approximate and subject to change

Virginia Landmarks
December 2, 1998

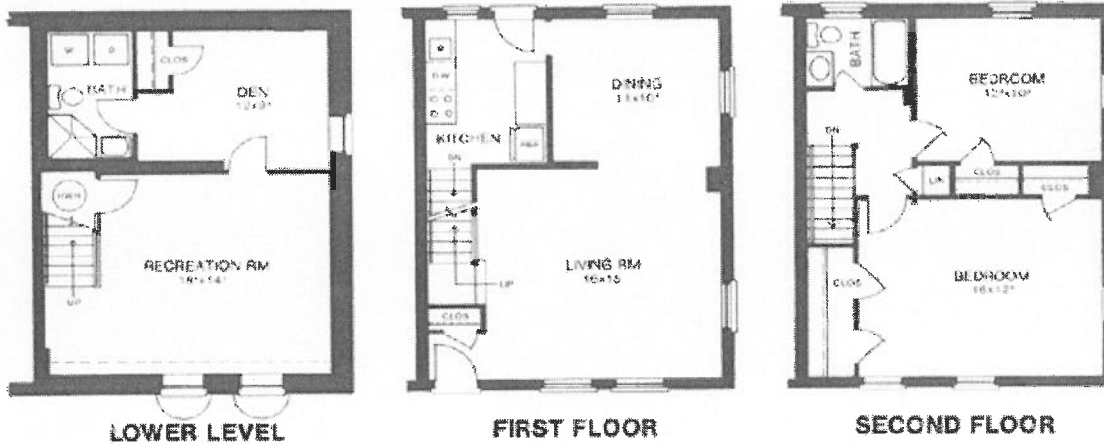
Fairlington Historic District

National Register
March 29, 1999

[← Back](#)

[Back to Models and Floor Plans Home Page](#)

DOMINION II



Dimensions shown are approximate and subject to change

Virginia Landmarks
December 2, 1998

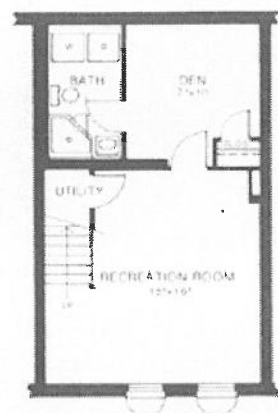
Fairlington Historic District

National Register
March 29, 1999

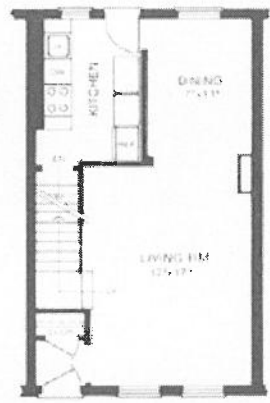


[Back to Models and Floor Plans Home Page](#)

EDGEWOOD



LOWER LEVEL



FIRST FLOOR



SECOND FLOOR

Dimensions shown are approximate and subject to change