



The Glen Echo

Newsletter of Fairlington Glen

March 2024

Metro Faces Huge Budget Deficit; Changes Proposed

Metro is facing a \$750 million budget deficit for Fiscal Year 2025 (beginning July 1, 2024) and, as a result, has proposed many service changes. The Metrobus changes alone will impact thousands of Arlington residents, including many bus riders in Fairlington.

To help close the funding gap, among the many changes will be the elimination of Metrobus Routes 22A and 22F, which many Fairlington residents use on a daily basis.

Metro's proposed budget will eliminate the deficit through drastic service and administrative cuts, fare increases, and cost savings initiatives, just to name a few. On their website, Metro said "We acknowledge the proposed budget would be painful to our customers and employees and would severely limit the service we provide to the community. Just as ridership is accelerating, we would have to reduce rail and bus service below what is needed for the number of people currently riding Metro."

Metro blames the budget deficit on the end of pandemic relief money and historic inflation.

Metro is asking for the public's feedback on these proposed changes; however, you only have until March 5, 2024 to respond.

Review the proposed FY 25 budget here:
<https://wmata.com/initiatives/budget>.

Access the survey and share your thoughts here: <https://wmata.questionpro.com/a/TakeSurvey?tt=rHO2gutfWB8EChrPelW9eQ%3D%3D>.

Jay Yianilos / Editor

Tell Metro What Matters to You

Metro is proposing fare and services changes.
Provide feedback by 5 p.m, March 5, 2024



The *Glen Echo* is published monthly. Our editor is always looking for ideas or input. Please email him at jasonyianilos@yahoo.com.

The *Glen Echo* is published online each month on the Glen website, at <https://www.fairlingtonglen.com>. To be notified by email when the latest edition is published, with a link to the newsletter, sign up for Glen Alerts via the Glen's website. Your email address will only be used for official Glen business.

Latest News From the Board

The Fairlington Glen Board of Directors held their monthly meeting on Tuesday, February 13, 2024. Here are some of the highlights.

APPROVED

Motion to approve the exterior painting specs for Courts 11 & 12.

Moved to ratify the earlier unanimous email vote to approve Kolas Contracting, Inc.'s additional carpentry repairs in Courts 9 & 10 in the amount of \$16,125.

Moved to ratify the earlier unanimous email vote to approve a variance for the installation of a front stoop handrail at 4252 35th Street S. (Court 15) with the stipulation that the handrail is painted black.

Moved to ratify the earlier unanimous email vote to approve a variance for the installation of a rear egress window at 4323 36th Street S. (Court 10).

NOTES

The Pool Committee reported that at this point everything is on schedule for the pool's opening in May. More pool-related info will be shared in the coming months.

The Landscape Committee reminded residents to alert the committee of any landscape problems that residents have noticed.

NEXT MEETING

The next monthly Board meeting is scheduled on Tuesday, March 12, 2024, at 6:30pm. The meeting will be held virtually via Zoom. Details to access the meeting will be announced closer to the date.

REMINDER / Arlington County Police / Non-Emergency

703-558-2222



Please be sure to report any suspicious and/or non-emergency activity to the Arlington County Police Department. It's important that the police have a record of ANY problem.

Landscape Committee Seeks a New Chair



As we get ready for spring and the warm weather ahead, the Glen's Landscape Committee is searching for a new Chair. If you are a gardener or want to learn more about gardening or keeping the Glen's surroundings attractive, then your community needs you.

The objective of the Landscape Committee is to assure that the Glen's landscape is maintained in an attractive, high-quality manner that is environmentally sensitive and complements the entire community.

The Landscape Committee's function and charge are described in the Glen's Handbook, which has been posted to our website. Basically, its function is to work closely with the Board to implement landscape policies and recommends policy changes. While the committee facilitates discussion of policies and practices, it is the Board that is ultimately responsible and to whom residents should turn when differences of opinion or problems arise. The Board is open to all views and will make decisions based on what is appropriate in a condominium environment with jointly-owned common areas.

Those interested should contact Susan Hunchar, who serves as the Board's liaison to the Landscape Committee, at susanhunchar.fairlingtonlen@gmail.com.

LIFEGUARDS

Wanted for Summer Employment

Atlantic Pool Service, Inc. is looking for Lifeguards to work this summer in the Fairlington Glen community.

We are one of the highest paying pool companies in the Northern Virginia Area.

For applications and information regarding discounted certification, please call

Atlantic Pool Service, Inc.

(703) 941-1000

or visit our website at www.atlanticpoolservice.net

Lifeguard certifications are not required at time of hire



2024 Welcome Packages are Now Available

The Glen's Board is happy to announce that 2024 Welcome Packages for new co-owners and/or new renters are available on our website.

These items serve as a great reference tool for information that may be especially helpful when you first move into the Glen. You will find a calendar of events along with information on insurance (both condominium and personal), maintenance & repair, parking, trash & recycling, volunteer opportunities, water usage, and more.



To access the Welcome Packages, go to our website at www.fairlingtonglen.com and search under the "documents" tab.

How to Properly Dispose of Boxes

Whether you put cardboard boxes out with your regular household garbage or as a part of the weekly recycling, please note that it's important to spend a moment breaking the boxes down before you put them outside.

It's quick. It's easy, And it's oh so important! Please make an effort. Thanks!



NOT like this!



But rather, like this!



A perfect example of what not to do with empty boxes. Please take the time to flatten them.

NOTE: If you are placing cardboard out on recycling day, please put all boxes, after you break them down, onto the ground. Do not put cardboard into the recycling bins. It just takes up too much room that is otherwise needed for plastic and aluminum items.

Caring for our Aging Sewer System



We need the help of all residents in caring for our aging sewer system, which was built during the 1940's and has handled newly added bathrooms and garbage disposals since condo conversion in the 1970's. In 2009, Fairlington Glen completed a major project to replace or reline its sewer laterals. Nonetheless, they still need to be treated with care, as the original lines are terra cotta.

Units in each building share a single sewer lateral to the County sewer line. It is important to remember that everything water borne in a building, whether from sink, bathtub, washing machines, or toilets, exits the building through this single lateral. That means that we all need to be careful what we put down our garbage disposals and in our toilets. If something gets clogged up before it can get to the main lateral, the unit in each building with the low basement (sometimes referred to as a "high ceiling" or the "low unit") is most likely to experience the backup overflow. If waste continues to enter the system, it can sometimes cause an overflow in other units.

The rule of thumb in Fairlington is "less is more" when using a garbage disposal. Please use your disposal only for bits of food left when working at the sink. Our plumbing systems were not originally designed for garbage disposals, and were retrofitted in the 1970's onto a system built during WWII. In particular, please do not put **celery, onions, pulpy fruits, grease, pasta, rice, coffee grounds, corn husks, potato peels, shrimp shells, bones, caulk, paint or anything substantial** down the garbage disposal. Flush the disposal with cold water even after turning it off to assure that waste gets through the system.

Please keep **FOG - fats, oils, and grease** - out of the pipes.

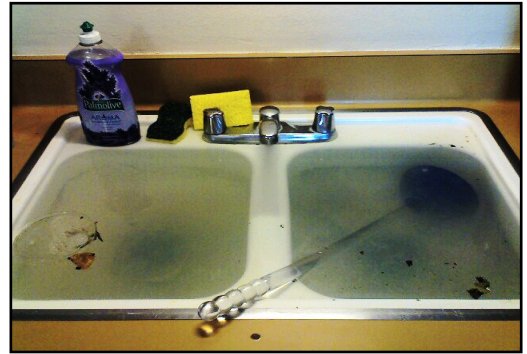
The rule on toilets is that only human waste and toilet tissue should go into the toilet. Please do not put **tampons, sanitary napkins, condoms, large wads of toilet paper, disposable diapers, adult & baby wipes, napkins, tissues, paper towels, newspaper, dental floss or pet waste and litter** into the toilet.

Please be sure your guests, babysitters, and contractors are aware of this important information. And don't be afraid to tell new neighbors about this practice.

One of the great things about Fairlington Glen is that we have trash pickup six days a week, and on holidays except for Thanksgiving, Christmas, and New Year's Day. Please be a good neighbor and put the waste noted above in **bold letters** into your daily trash rather than in our fragile sewer system.

Sink Backups are Co-owner Responsibilities

As is the case with water supply pipes, water drainage lines (whether from the kitchen, bathroom, or laundry area) are unit components and are therefore the maintenance and repair responsibility of individual co-owners to the point where they exit through the underground sanitary sewer system beneath the basement floor slab.



Fixing drainage problems, especially from sinks, sometimes requires cooperation between two adjoining co-owners, whose lines are in the wall that separates the units, with ownership extending to the center line. Drain lines may converge to a single line in the wall, requiring a plumber to access the line from one or both units. This is true whether the units are in a B-building or are two townhouses whose kitchens back to each other. In a B-building, of course, fixing sink back ups often requires the cooperation and shared expense of four co-owners/residents.

Always refer to the Chart of Maintenance, Repair and Replacement Responsibilities contained in the Appendix of the Glen Handbook (September 2023) on pages 68-70.

No Wipes in the Pipes!



Not flushable, actually!!

Fairlington neighbors are reminded that “flushable” is NOT flushable in Fairlington’s aging sewer lines, which date back to the 1940’s. Adult wipes, baby wipes, or even disinfecting wipes should instead be discarded in your household garbage.

Over the years, there have been major sewage backups in the Glen which were ultimately caused by one or more residents disposing of wipes in the toilet. It’s been proven that these wipes do not disintegrate, and therefore cause blockages in the sewer system when wipes collect over time.

In Fairlington, this means nasty problems for the low unit. You see, units in each building share a single sewer lateral to the County sewer line. A blockage in the sewer lateral usually means a backup into the unit that has the low basement (sometimes referred to as the low unit or the unit with the high ceiling). More on this on page 7. A sewer backup could cost you a bundle and can be a nightmare for your neighbors.

The Lowdown on the Low Unit

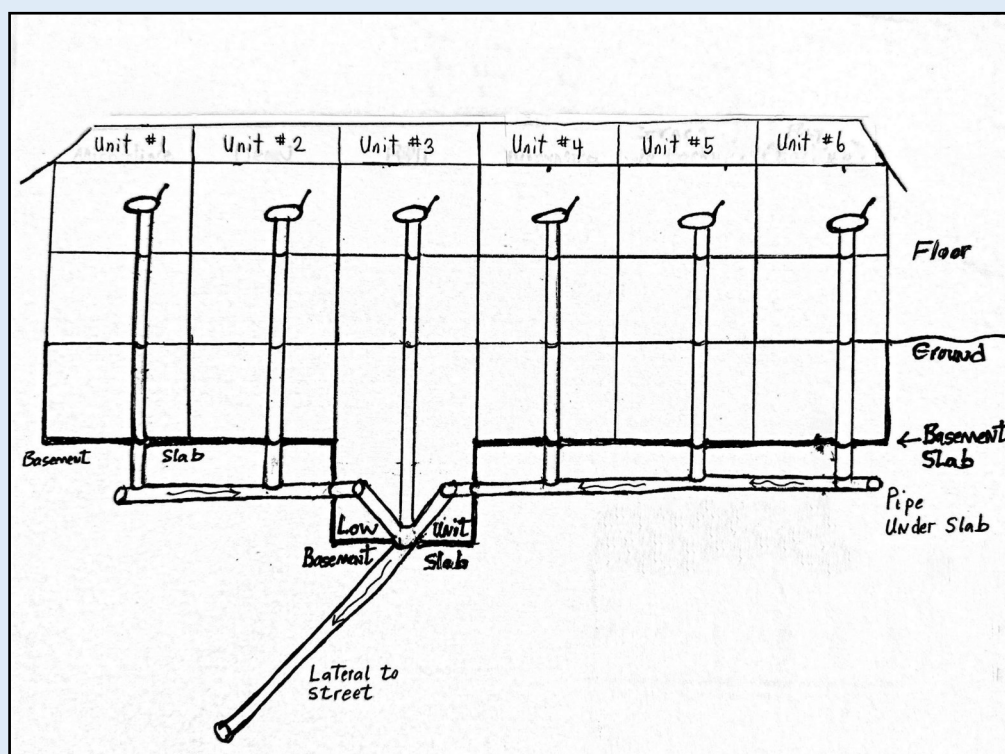
In order to understand the term "low unit," it's necessary to cover a little history first. There are 56 residential buildings in the Glen which contain 352 total units. As you know, Fairlington was built in the early 1940's as housing for Defense Department workers assigned to the Pentagon. The units later became apartments until a renovation in the early to mid 1970's converted the property into condominiums.

Units in each building (or row of units) share a single sewer lateral to the County sewer line. It is important to remember that everything water borne in a building, whether from sink, bathtub, washing machines, or toilets, exits the building through this single lateral. That means that we all need to be careful what we put down our garbage disposals and in our toilets. If something gets clogged up before it can get to the main lateral, the unit in each building with the low basement (sometimes referred to as a "high ceiling" or "low unit") is most likely to experience the backup overflow. If waste continues to enter the system, it sometimes causes an overflow in other units.

The Glen has 56 low units. If you own one, perhaps the real estate agent sold you on the fact that there are higher ceilings in the basement. The ceilings are only higher because the floor is lower. And below that basement slab is a single pipe containing everything water borne from each unit as it converges to enter the sewer lateral to the Arlington County sewer line. Now you know!

Most people don't think about what lies below the ground or under our homes when buying or renting in Fairlington. However, it's important to know what's there and how it works. Nobody in the Glen has a better understanding than Glen Treasurer Maynard Dixon, who is an original co-owner. His fellow Board members have sometimes called him the drain/pipe guru.

Perhaps you'll get a better sense of what is being discussed by studying the diagram below that Maynard drew up a few years ago to help Board members and residents in Court 16 navigate through a nasty backup. In this diagram, Unit #3 is the low unit.



Pipes Within Units are Co-owner Responsibilities



This allows heat to reach the pipes.

Co-owners are responsible for all pipes within their units including those that pass through their units but serve other units. Burst pipes are the co-owner's responsibility, so be sure to take precautions.

During the winter months, all residents should shut off water to outside faucets, remove hoses, and open outside spigots. Also, thermostats should be set no lower than 55 degrees to protect indoor pipes. If you are going out of town during the winter months, **DO NOT TURN OFF YOUR HEAT!**

You should also know where your unit's main water supply valve is located so you can quickly shut off the water to your unit if a pipe breaks. If pipes are exposed to cold air, wrap them with insulation. The most vulnerable pipes are along exterior walls and those that bring water into a home or building at its foundation. If you see any leakage on the common intake side of your shut-off valve, call a plumber without delay because water flowing to that segment can only be cut off from outside the building.

During periods of extreme below freezing temperatures outside, keep pipes inside in kitchen cabinets and bathroom vanities warm by opening the doors to the cabinets and vanities to let heat in. Also, keep an upper-floor cold water tap open just enough for a drip to keep water moving through the pipes. Be sure to keep an eye on the tap.

Daylight Saving Time Returns

It's just about time to change the clocks again. On Sunday, March 10, 2024, we officially return to Daylight Saving Time. That means at 2:00am please set your clocks forward one hour - or change your clocks before you go to bed on Saturday night. You'll lose an hour of sleep that night, but gain daylight in the afternoon.

Plus, this is always a great time to remind you to change the batteries in your smoke detector.



Daylight Saving Time in the United States begins on the second Sunday of March and continues until the first Sunday of November.

Dual Party Presidential Primary is March 5

Registered voters in Virginia will be going to the polls on Tuesday, March 5 for a dual party presidential primary election.

This may sound a bit confusing, so let's explain:



1. Both the Democratic and Republican parties have requested a Primary Election for the purpose of selecting delegates for the office of President of the United States. And both primaries will be on the same date.

2. Virginia is an open primary state meaning that voters do not register by political party. Any registered voter is eligible to vote in any primary election. If both the Democratic and Republican parties hold primaries on the same day, voters must choose which party ballot they wish to vote - one or the other, but not both.

3. When you arrive to vote in-person at the Fairlington Community Center, 3308 S. Stafford Street, you will be asked which party's primary you choose to vote in.

4. That choice doesn't mean you are a Democrat or a Republican, and it doesn't mean that the election officials know whom you are voting for.

Polls will be open from 6:00am to 7:00pm in Virginia. There may be lines when you check in, especially early in the morning and late in the afternoon. Please be patient and give yourself plenty of extra time. In fact, you may want to look at a sample ballot ahead of time. Go to <https://vote.arlingtonva.gov/Elections>.

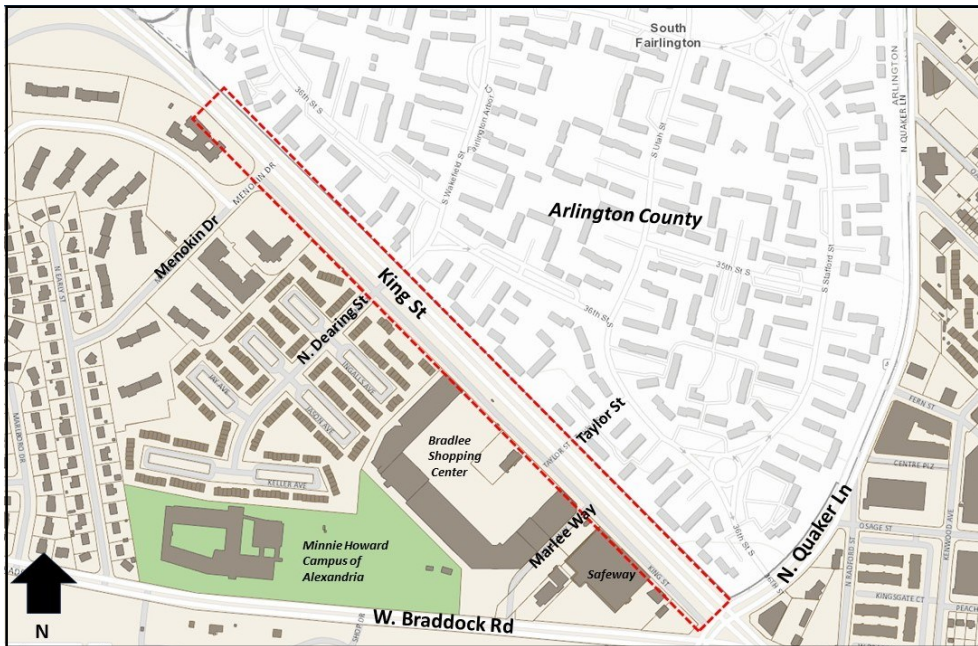
Remember, in Arlington County we vote a paper ballot. Once you mark your ballot, you'll feed it into a scanner that will tabulate your vote and take a picture of both sides of your ballot. So there's both an electronic copy and a paper copy to be used as a back up.

Please remember to bring your acceptable ID to vote. While photo ID's are no longer required, voters must still bring identification to the polls. Acceptable forms of ID include:

- Voter confirmation documents you received after you registered to vote
- Virginia DMV-issued Driver's License or Identification Card
- Valid United States Passport
- Any ID card issued by the U.S., Virginia, or a local Virginia government
- Valid student ID issued by a public or private school of higher education located in the U.S.
- Valid student ID issued by a public school or private high school in Virginia
- Employer-issued photo ID card
- Any current utility bill, bank statement, government check, paycheck, or other government document with your name and address
- An ID Confirmation Statement

Any registered voter who does not possess one of the above mentioned forms of ID may sign an ID Confirmation Statement. A voter who does not bring an acceptable ID to the polls or does not sign an ID Confirmation Statement will be offered a provisional ballot.

Alexandria Considers Plans for King-Bradlee Safety



At an open house event on February 15, 2024, City of Alexandria staff shared three design alternatives for the King Street-Bradlee Safety and Mobility Enhancements Project.

The City is seeking community feedback on mobility, safety, access, and stormwater issues along King Street between N.

Quaker Lane and Menokin Drive. The purpose of this project is to evaluate existing safety issues and develop concept designs for future improvements.

This portion of King Street was identified for multimodal improvements in the City's 2021 adopted Alexandria Mobility Plan and is a priority location to install enhanced bicycle facilities and additional sidewalks to complete gaps in the City's existing bicycle and sidewalk network. Safety improvements along this corridor will help the City reach the Vision Zero goal of eliminating all fatal and severe crashes.

The goals of this project are to:

- Improve mobility, safety, and access for all roadway users of all ages, abilities and modes of travel.
- Install safer pedestrian access and bicycle facilities which connect into the surrounding network.
- Improve existing stormwater treatment in the corridor to reduce instances of standing water.
- Maintain or enhance existing transit facilities.

You are invited to review the three alternatives under “Project Updates” at: <https://www.alexandria.gov/transportation-planning/project/king-street-bradlee-safety-mobility-enhancements>. You’ll also find an online form to provide your feedback on the matter, but keep in mind that the deadline to respond is March 15, 2024.

Arlington's Spring E-CARE is March 23

Arlington County will host its spring Environmental Collection and Recycling Event (E-CARE) on Saturday, March 23, 2024 from 8:30am to 3:00pm at Wakefield High School at 1325 S. Dinwiddie Street. This event, which allows Arlington residents to quickly and safely dispose of household hazardous materials, will be held rain or shine.

This is a safe, quick disposal drive-thru event. If possible, please place materials for drop-off in the clean trunk or bed of your vehicle. Keep in mind that E-CARE is only available for personal use. Business and commercial waste will NOT be accepted.

Items that are unacceptable include: asbestos, explosives & ammunition, freon, medical wastes, prescription medicines, radioactive materials, and smoke detectors.

For more information, call 703-228-5000.



SPRING E-CARE

Saturday, March 23
8:30 AM - 3 PM
(rain or shine)
Wakefield High School
1325 S. Dinwiddie St.

Safely dispose of or recycle many items, including:

- Paint Products (25-can limit)
- Old Electronics
- Garden Chemicals
- Fire Extinguishers
- Household Cleaners
- Flammable Solvents
- Automotive Fluids
- Small Metal Items
- And more!

NOTE: Bicycle donations will not be collected at Spring E-CARE 2024

Learn more at arlingtonva.us/E-CARE or call 703-228-5000



Free Paper Shredding Offered Monthly



On the first Saturday of every month (unless that is a holiday weekend), Arlington County offers free paper shredding to County residents from 8:00am to 4:30pm at the Solid Waste Bureau's Earth Products Yard, located at 4300 29th Street South. If a holiday weekend, then shredding shifts to the following weekend.

These events are for Arlington County residents only. Businesses are not allowed.

You may bring up to two boxes (no larger than 18 in x 11 in x 10 in) or two paper bags of paper to shred per customer. To learn what types of paper are accepted, visit www.arlingtonva.us and search "paper shredding."

Due to a June 2023 change in logistics, residents are no longer able to view the shredding process, and they give their tacit approval by entering the drive-thru routing.

Fairlington Glen Contact List (March 2024)

BOARD OF DIRECTORS

President	Charlie Robbins	3534 S. Stafford	703-907-9842	cbrobbins63@gmail.com
Vice President	Jeremy Wiedemann	4172 S. 36th	323-434-3260	jmwiedemann.fairlington.glen@gmail.com
Treasurer	Maynard Dixon	4316 S. 35th	703-909-4562	maynarddixonjr@gmail.com
Secretary	Seth Theuerkauf	4132 S. 36th	252-723-9513	seth.fairlington.glen@gmail.com
At Large	TJ Doyle	4134 S. 36th	202-306-5291	tj.doyle.fairlington.glen@gmail.com

COURT REPRESENTATIVES GROUP (CRG) / Chair Michael Wells (Court 7)

1 (27 units)	Suzanne Wible	3509A S. Stafford	301-751-2155	sfwible@hotmail.com
2 (26)	Thora Stanwood	3551 S. Stafford, #A1		thorastanwood@gmail.com
3 (27)	Tina Collier	3581 S. Stafford, #A1	864-325-9004	tinagirl51@yahoo.com
4 (23)	Elizabeth Dreazen	4133 S. 36th	847-208-0198	edreazen@aol.com
5 (17)	Florence Ferraro	4118 S. 36th, #B2	703-927-6950	fdferraro1@verizon.net
6 (24)	Jeremy Wiedemann	4172 S. 36th	323-434-3260	jmwiedemann.fairlington.glen@gmail.com
7 (16)	Michael Wells	4208 S. 36th	571-429-1018	mike_8453@yahoo.com
8 (16)	Chris Bell	3617 S. Taylor	850-723-5814	bellcrt@yahoo.com
9 (22)	Roxanne Sykes	3513 S. Utah	703-567-4865	roxannesykes@comcast.net
10 (25)	Carol Goodloe	4343 S. 36th	703-232-5142	cagoodloe@comcast.net
11 (22)	Hannah Anderson	4237 S. 36th	714-330-3726	gohannah1234@gmail.com
12 (22)	Lori Derkay	3566 S. Stafford	703-379-2895	lori.derkay@outlook.com
13 (23)	Charlie Robbins	3534 S. Stafford	703-907-9842	cbrobbins63@gmail.com
14 (14)	Ellen McDermott	4206 S. 35th	703-575-7864	ellenmcdermott@yahoo.com
15 (36)	Mike Hahn	4270 S. 35th, #A2	703-578-3138	mhahn10262@cs.com
16 (12)	Maynard Dixon	4316 S. 35th	703-909-4562	maynarddixonjr@gmail.com

COORDINATORS and COMMITTEE CHAIRS

Archivist /Finance	Maynard Dixon	4316 S. 35th	703-909-4562	maynarddixonjr@gmail.com
Basketball	Patrick Murray	4144 S. 36th	703-945-5224	pgmurray@att.net
Safety & Security				fairlingtonglensecure@gmail.com
Glen Echo	Jay Yianilos			jasonyianilos@yahoo.com
Landscape	VOLUNTEER NEEDED			glenlandscaping@gmail.com
Pool (co-chairs)	Lori Derkay - 703-379-2895 lori.derkay@outlook.com / Carol Goodloe - 703-232-5142 cagoodloe@comcast.net			
Tennis (co-chairs)	Carol Goodloe - 703-232-5142 cagoodloe@comcast.net / Sandy Thurston - 703-244-2761 sandy2swim@gmail.com			
Variance	Greg Lukmire	4234 S 35th	703-795-5865	glukmire@verizon.net
Onsite Staff	María Castro and Nelson Ordoñez		703-820-9567	fairlingtonglenstaff@hotmail.com
Property Manager	Candace Lewis, Cardinal Management		703-565-5244	c.lewis@cardinalmanagementgroup.com
Onsite Manager	Amy Steliga (Amy's office hours: Monday, Wednesday, & Friday telework AND Tuesday & Thursday 9:00am-1:00pm)		703-820-9567	a.steliga@cardinalmanagementgroup.com




EMERGENCY NUMBER (after business hours and on weekends and holidays) 703-569-5797

NOTE: The Glen does not retain contractors for, or allow staff to undertake, repairs that are a co-owner responsibility under its By-laws (such as sink backups), absent emergency where the co-owner is unable to act (disabled, out-of-town, etc.).

March 2024

Sun	Mon	Tue	Wed	Thu	Fri	Sat
					1	2 Bulk Trash Pick Up
3	4	5 	6	7	8	9
10 	11	12 Board Meeting 6:30pm	13	14	15	16
17 	18	19 	20	21	22	23 Spring E-CARE 8:30a-3p
24 	25	26	27	28	29	30
31 						

April 2024

Sun	Mon	Tue	Wed	Thu	Fri	Sat
	1 	2	3	4	5	6 Bulk Trash Pick Up
7	8	9 Board Meeting 6:30pm	10	11	12	13
14	15	16	17	18	19	20
21	22 	23 	24	25	26	27
28	29	30				